

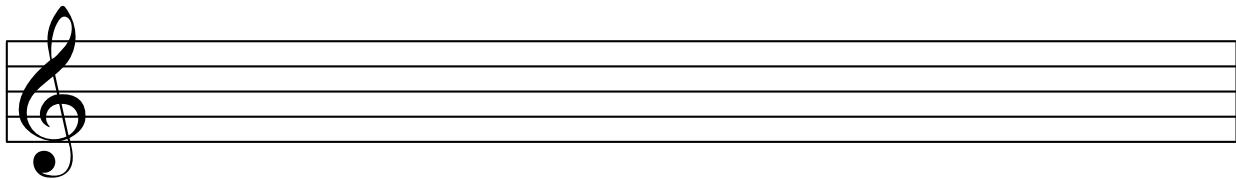
Name: _____

PRIMARY CHORDS IN MAJOR

Step 1: On the blank below, write down which key you are in (e.g., D Major).

_____ Major

Step 2: On the staff below, draw the appropriate number of sharps or flats for the key signature. Then, draw out the eight notes of a one-octave scale. Add the letter names in the blanks.



Step 3: When in major, the most frequently occurring chords happen to be based on scale notes 1, 4, and 5 (or, I, IV, and V). These three chords are known as the **Primary Chords**. Write the three primary chords below. (E.g., if you are in the key of C major, the "one" (I) chord is C major or "C"; the "four" chord (IV) is F major or "F"; and the "five" chord is G major or "G".)

--	--	--

I IV V
one four five

Step 4: Now let's take a look at the rest of the possible chords in this key. Fill in the names of each chord in the boxes below. Be sure to indicate which chords are minor (for example, D minor would be "Dm").

--	--	--	--	--	--	--	--

I ii iii IV V vi vii° I
one two three four five six seven one

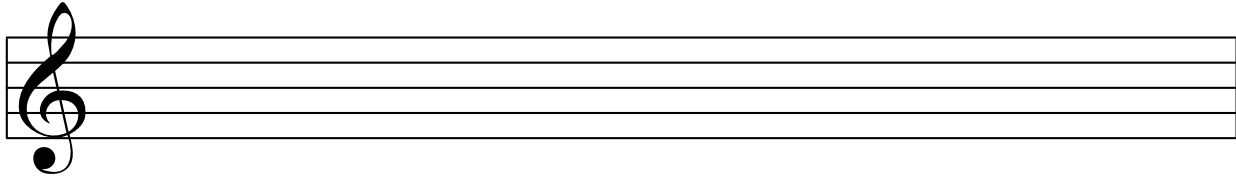
Name: _____

PRIMARY CHORDS IN MINOR

Step 1: On the blank below, write down which key you are in (e.g., D Minor).

_____ Minor

Step 2: On the staff below, draw the appropriate number of sharps or flats for the key signature. Then, draw out the eight notes of a one-octave scale. Add the letter names in the blanks.



Step 3: Circle the seventh note of the scale above, and then raise it by a half step (aka, semitone) by adding a natural or a sharp. This is called the Leading Tone, and is a common alteration in minor keys.

Step 4: When in minor, the most frequently occurring chords happen to be based on scale notes 1, 4, and 5 (or, i, iv, and V). These three chords are known as the **Primary Chords**. Write the three primary chords below. (E.g., if you are in the key of A minor, the "one" (I) chord is A minor or "Am"; the "four" chord (iv) is D minor or "Dm"; and the "five" chord is E major or "E".)

--	--	--

i iv V
one four five

Step 5: Now let's take a look at the rest of the possible chords in this key. Fill in the names of each chord in the boxes below. Be sure to indicate which chords are minor (for example, D minor would be "Dm").

--	--	--	--	--	--	--	--

i ii° III+ iv V VI vii° i
one two three four five six seven one