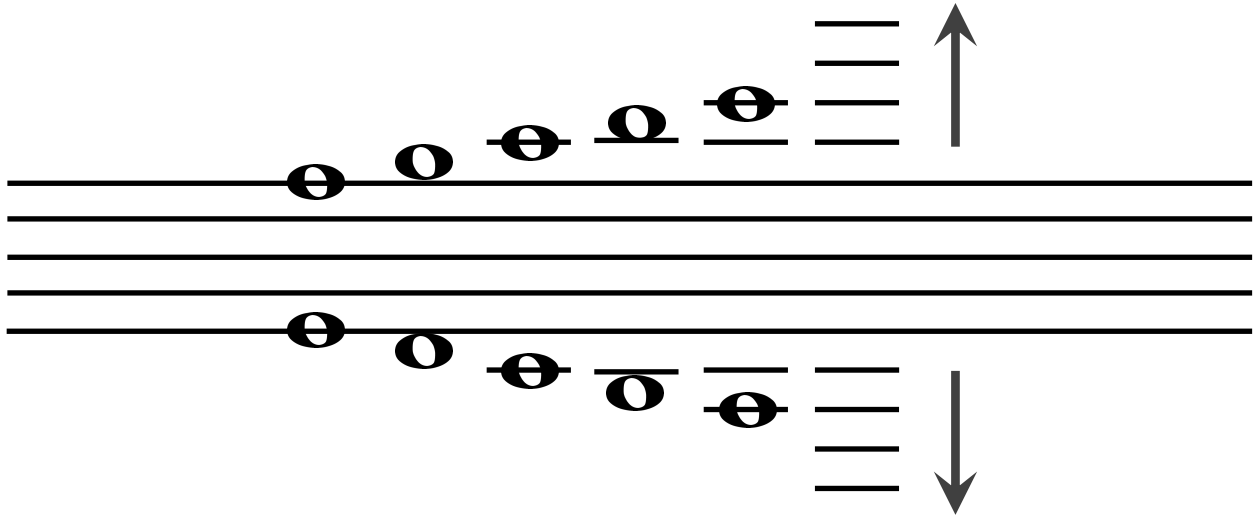


Name: \_\_\_\_\_

## Identifying Ledger Lines

The **staff** is the set of 5 lines and 4 spaces that represent the notes of the musical alphabet. **Ledger lines** are short lines that are used to extend the staff to reach even higher or lower sounds.



Identify the notes below by writing a letter in each blank.

A musical staff with a treble clef. It contains several notes: one on the top line, one in the space above the top line, one on the first ledger line above the staff, one on the second ledger line above the staff, one on the top line, one in the space above the top line, one on the first ledger line above the staff, one on the second ledger line above the staff, one on the top line, one in the space above the top line, one on the first ledger line above the staff, and one on the second ledger line above the staff. Below the staff are several dashed lines for writing.

A musical staff with a bass clef. It contains several notes: one on the top line, one in the space above the top line, one on the first ledger line above the staff, one on the second ledger line above the staff, one on the top line, one in the space above the top line, one on the first ledger line above the staff, one on the second ledger line above the staff, one on the top line, one in the space above the top line, one on the first ledger line above the staff, and one on the second ledger line above the staff. Below the staff are several dashed lines for writing.