

Teacher: \_\_\_\_\_

Session: \_\_\_\_\_

## Review Test B

Name: \_\_\_\_\_

1. Name the notes below using letters of the musical alphabet.



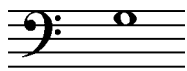
\_\_\_\_\_



\_\_\_\_\_



\_\_\_\_\_



\_\_\_\_\_



\_\_\_\_\_



\_\_\_\_\_



\_\_\_\_\_



\_\_\_\_\_



\_\_\_\_\_

2. Draw a whole note.  How many beats do whole notes get? \_\_\_\_\_

3. Draw a half note.  How many beats do half notes get? \_\_\_\_\_

4. Draw a quarter note.  How many beats do quarter notes get? \_\_\_\_\_

5. Draw a dotted half note.  How many beats do dotted half notes get? \_\_\_\_\_

6. **Matching:** Draw a line from the symbol on the right to its name on the left.

*treble clef*

*bass clef*

*staff*

*barline*

*double barline*

*repeat sign*

*forte (loud)*

*piano (soft)*

*f*



*p*

