

The Periods of MUSIC HISTORY



Name: _____

Date: _____

Baroque Era

1685-1750



Harpsichord



Fashion in the late 1600's



"The Storm on the Sea of Galilee" (1633), by Rembrandt

Popular Forms:

- sonata
- concerto
- sinfonia
- ground bass
- cantata
- oratorio

Famous Composers:

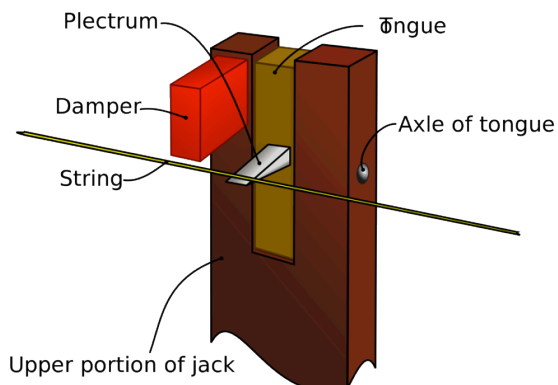
- Johann Pachelbel
- Henry Purcell
- Antonio Vivaldi
- George Frideric Handel
- Johann Sebastian Bach

Baroque music is...

- rhythmic
- elaborate
- complex and detailed
- embellished with ornaments
- dramatic

Harpsichord Action

The strings are plucked with a quill



The Trevi Fountain in Rome, Italy (built 1732-62)

CLASSICAL ERA

1750-1820



The *pianoforte*, invented by Cristofori in 1720, was now more popular than the harpsichord.



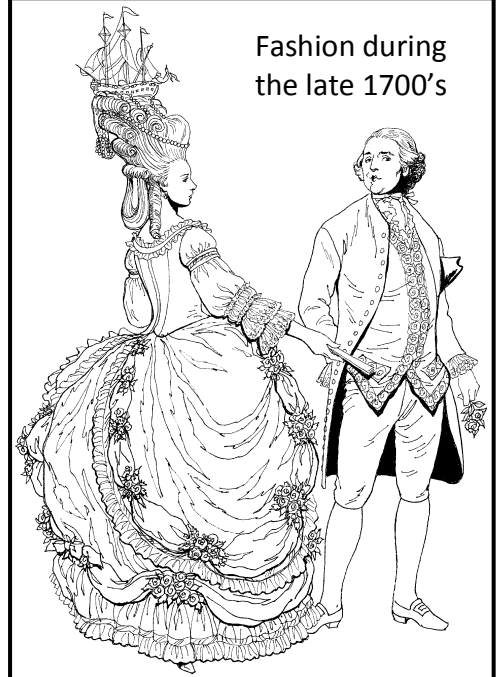
The U.S. Capital building in Washington D.C.

FAMOUS COMPOSERS:

- Franz Joseph Haydn
- Muzio Clementi
- Wolfgang Amadeus Mozart
- Ludwig van Beethoven

POPULAR FORMS:

- sonata
- concerto
- string quartet
- symphony
- divertimento
- serenade



CLASSICAL MUSIC IS...

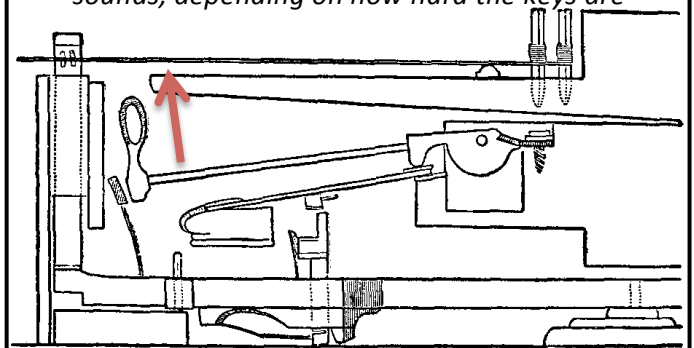
- simple but beautiful
- restrained and elegant
- clear in melody and accompaniment
- usually singable, with clear phrases



"The Oath of the Horatii" (1784), by Jacques-Louis

Pianoforte Escapement Action

The strings are struck with a leather-covered hammer. This allows the player to create loud or soft sounds, depending on how hard the keys are



Romantic Era

1820-1900



A fortepiano from about 1838.

Famous Composers:

- Frederic Chopin
- Robert Schumann
- Franz Liszt
- Richard Wagner
- Piotr Ilyich Tchaikovsky

Popular Forms:

- character pieces (for piano)
- tone poems (for orchestra)
- songs



Fashion in the mid-1800's



"The Hay Wain" (1821), by John Constable



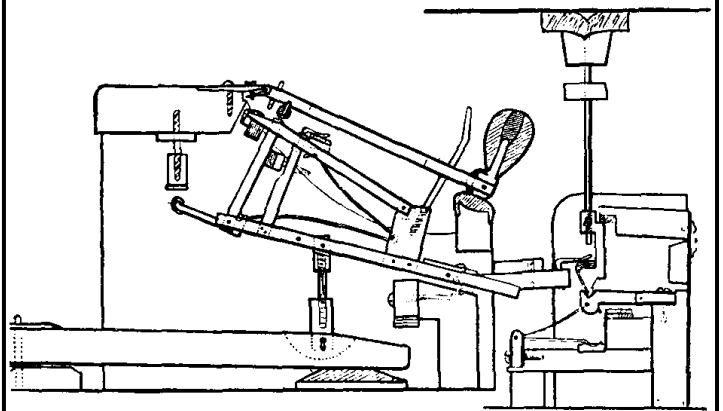
Palace of Westminster in London (built 1840-70)

Romantic Music is...

- dramatic, emotional, & descriptive
- virtuosic
- full of contrasts (dynamics, tempo, mood, etc.)
- thicker texture
- complex harmonies

Pianoforte Double Escapement Action

In 1821, Erard invented the double escapement action, which allows a note to be repeated even if the key has not completely returned to its normal position, permitting faster repetitions.



Modern Era

1900-present

Famous Composers:

- Sergei Rachmaninoff
- Béla Bartók
- Igor Stravinsky
- Sergei Prokofiev
- Aaron Copland
- John Cage

Modern Music is...

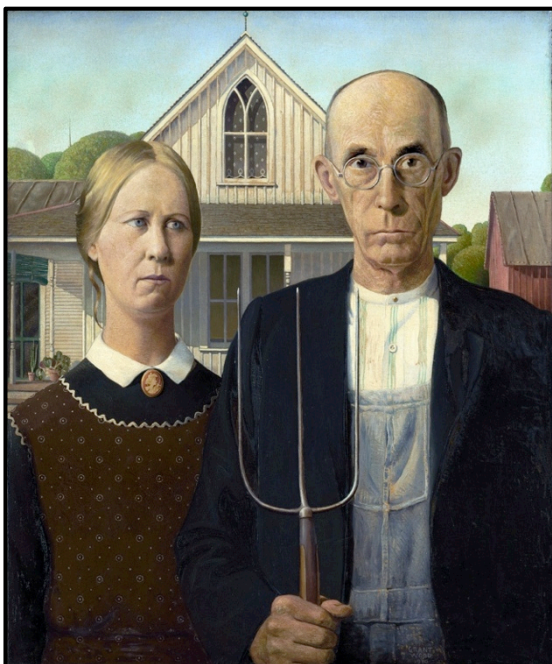
- experimental
- often dissonant
- driven by the desire for new sounds
- often based on unusual scales/modes (such as the whole tone scale) or no scale at all (atonal).
- covering a wide variety of trends and styles
- anything goes!



A modern piano from around 2000.



Sydney Opera House in Australia (built 1959-74)



"American Gothic" (1930), by Grand Wood

Modern Piano Action

A few improvements have been made, but the double escapement action developed during the Romantic Period has remained basically the same.

