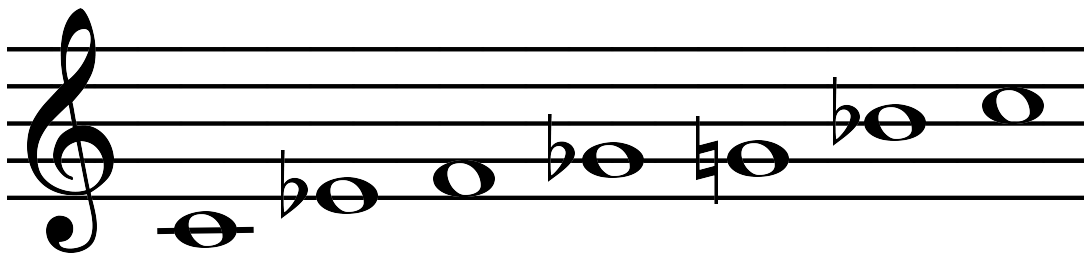
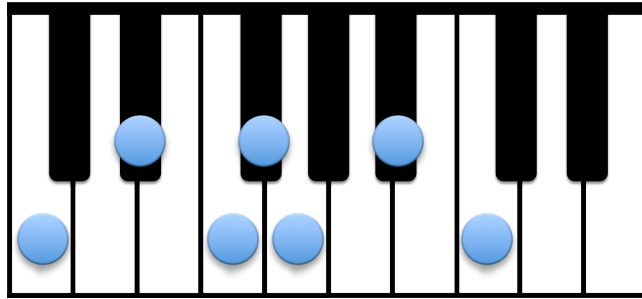


THE 12-BAR BLUES IN C



4 C | C | C | C |
| F | F | C | C |
| G | F | C | C :||

LH PATTERNS FOR THE 12-BAR BLUES

WHOLE NOTES

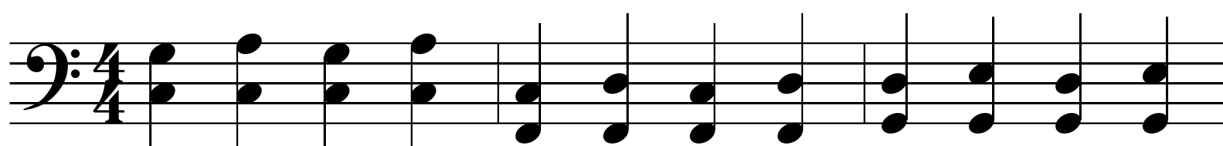
C F G



Musical notation for Whole Notes pattern in 4/4 time. The first bar has a whole note C. The second bar has a whole note F. The third bar has a whole note G.

BLOCKED 5THS & 6THS


C F G



Musical notation for Blocked 5ths & 6ths pattern in 4/4 time. The first bar has a C chord (C5, F5, G5). The second bar has an F chord (F5, C6, D6). The third bar has a G chord (G5, A5, B5).

WALKING BASS


C F G



Musical notation for Walking Bass pattern in 4/4 time. The first bar has a C walking bass line (C2, D2, E2, F2). The second bar has an F walking bass line (F2, G2, A2, B2). The third bar has a G walking bass line (G2, A2, B2, C3).

EXTENDED WALKING BASS

C F G



Musical notation for Extended Walking Bass pattern in 4/4 time. The first bar has a C walking bass line with a flat (C2, D2, E2, F2, G2, F2, E2, D2). The second bar has an F walking bass line (F2, G2, A2, B2, C3, B2, A2, G2). The third bar has a G walking bass line (G2, A2, B2, C3, B2, A2, G2, F2).